



SAN DIEGO  
**WORKFORCE**  
**PARTNERSHIP®**



# New Data on Youth Disconnection: State of Opportunity Youth in San Diego County

March 15, 2018

#OpportunitySD



Programs change lives.

Systems, structures & policies  
*transform communities.*

#OpportunitySD

# *What's this webinar thing about?*

- **Local action, national context**
- “Cut the Rate” and “Halve the Gap”:  
Are we positively trending?
- **Moving the movement forward**

**#OpportunitySD**

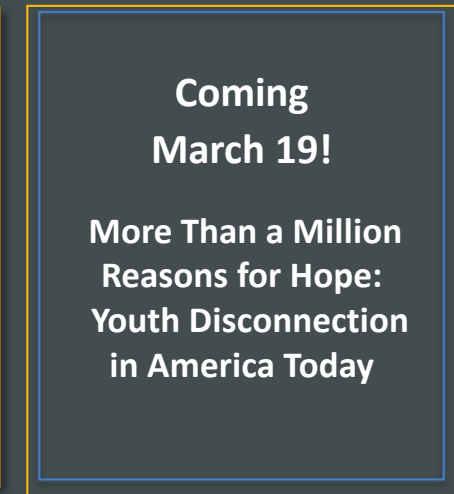
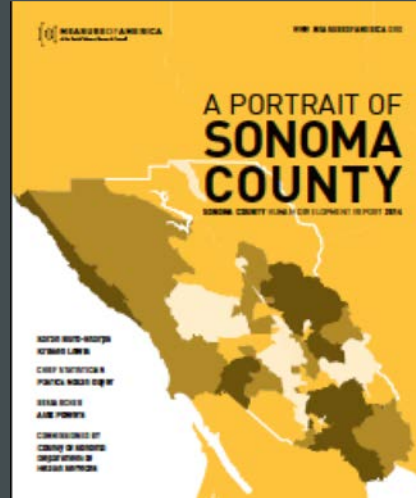
# Local action, national context

Kristen Lewis  
Co-Director, Measure of America  
@MOA\_org



#OpportunitySD



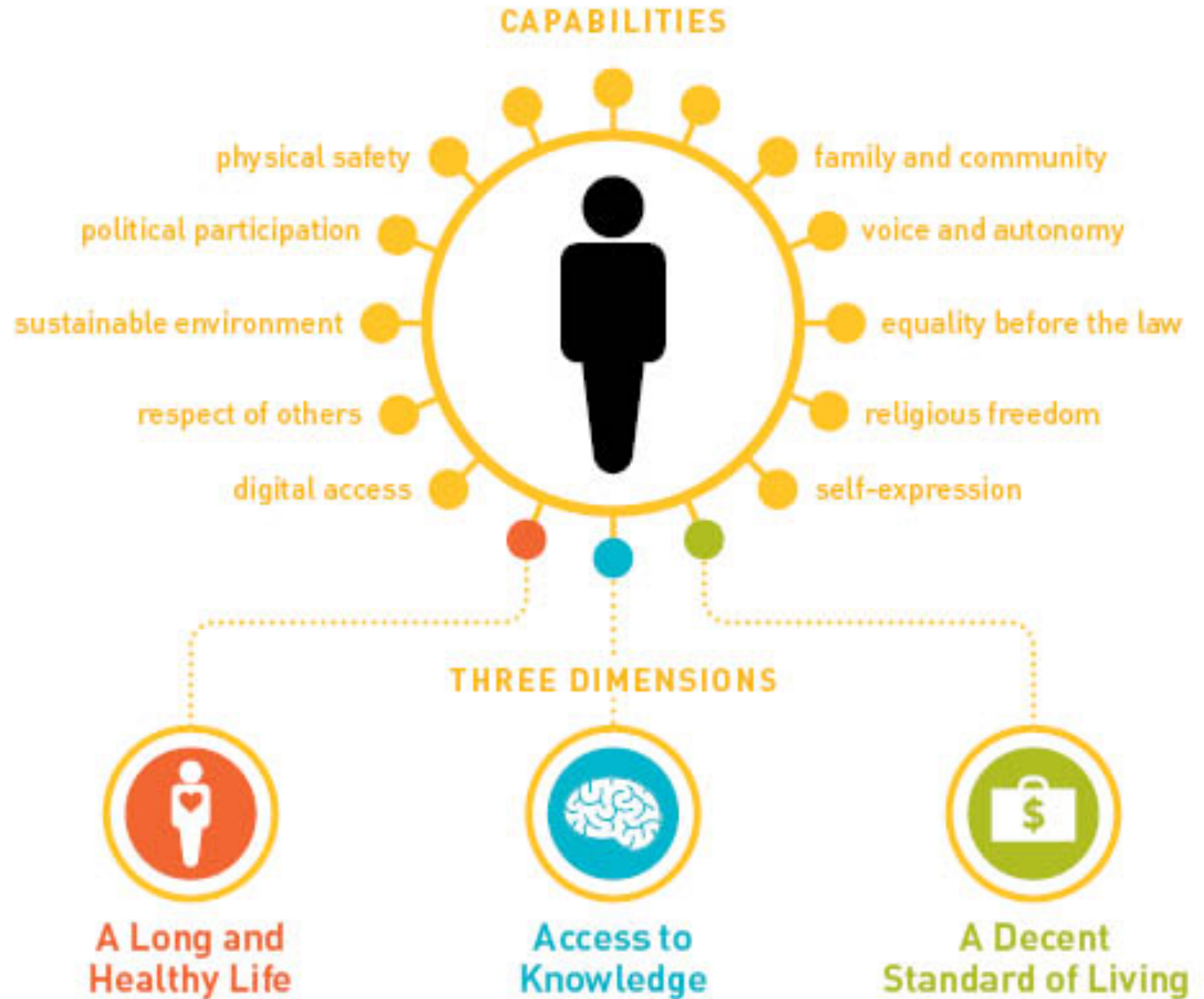


**Measure of America**, a nonpartisan project of the nonprofit Social Science Research Council, provides easy-to-use yet methodologically sound tools for understanding **well-being and opportunity** in America.

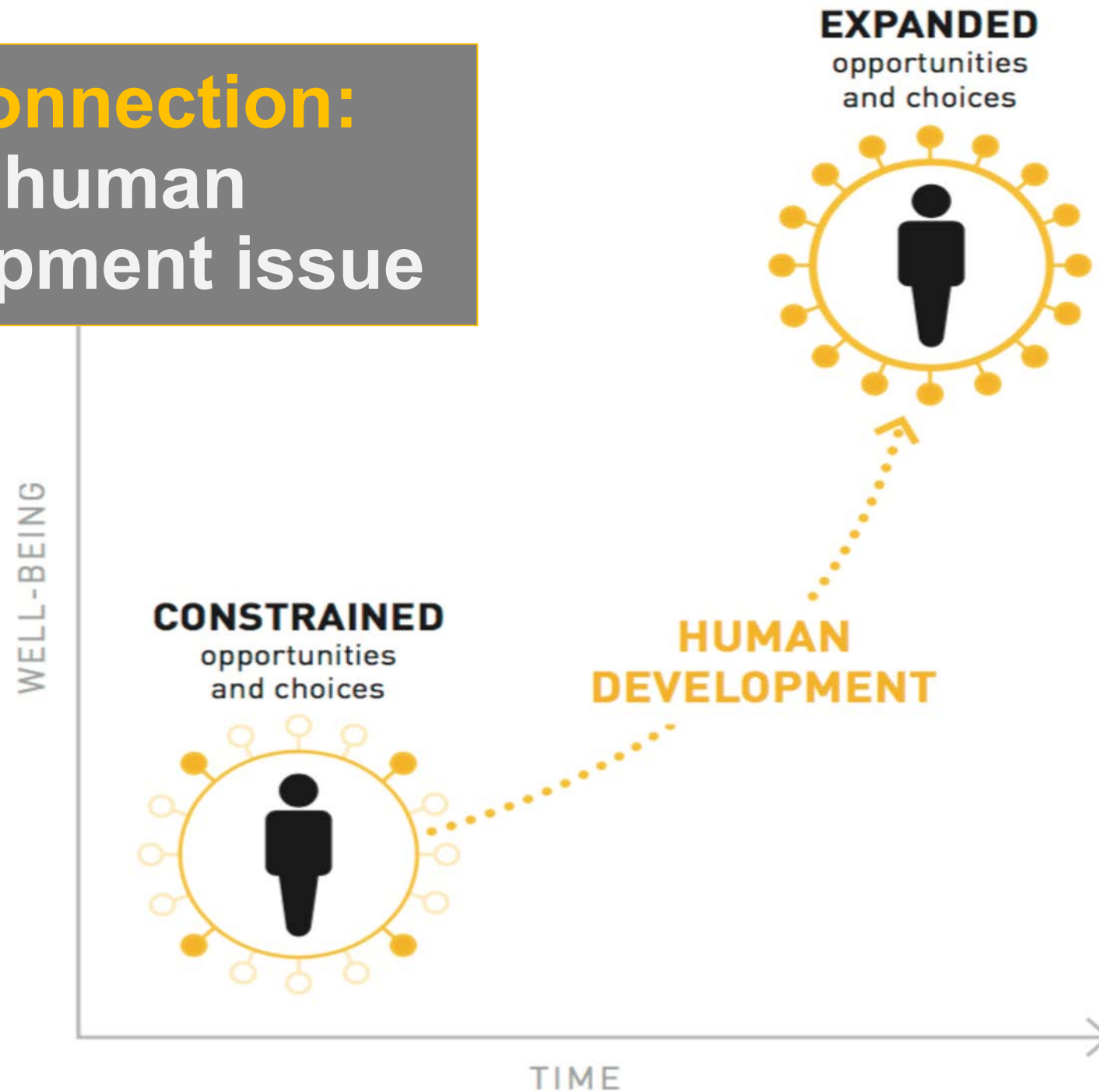
- Create metrics focused on how **people** are doing. A leading indicator of societal progress is how young people are faring in their transition to adulthood.
- Rooted in the **human development** and capabilities approach.

# Human development: How do we measure it?

#OpportunitySD

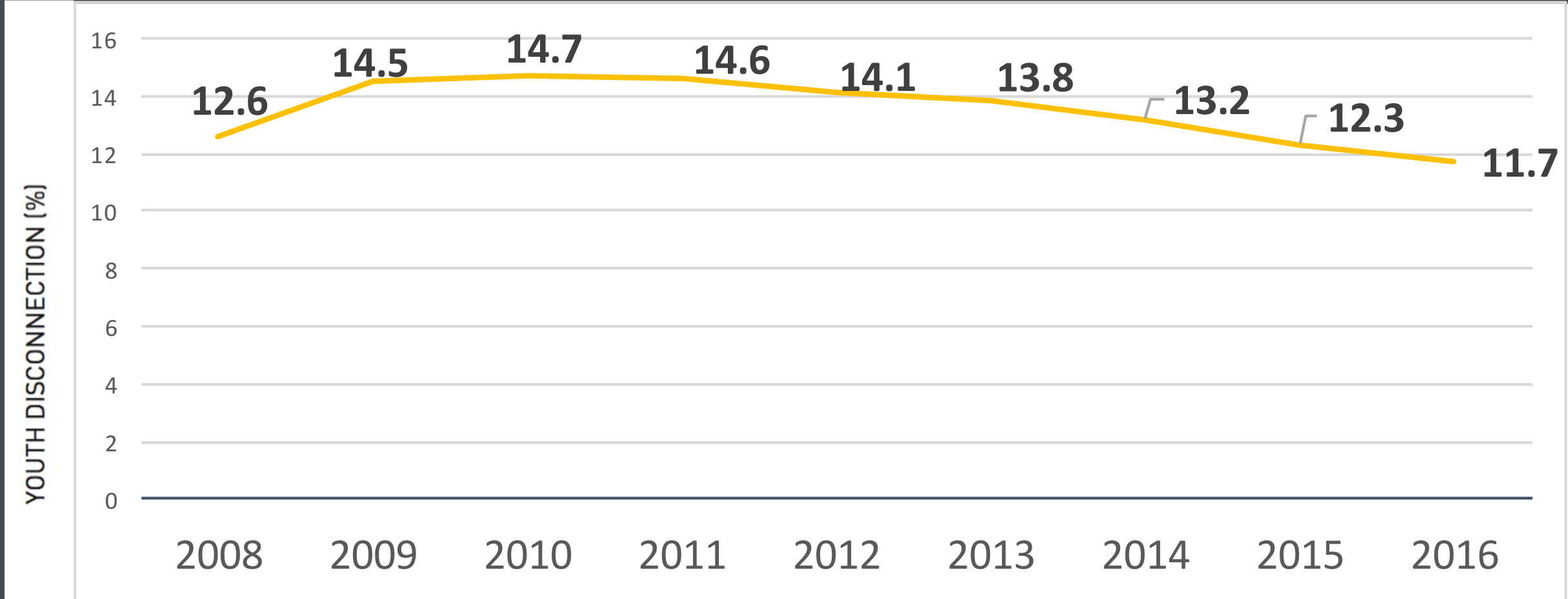


# Disconnection: A human development issue



## The good news:

# National youth disconnection continues to decline!



Source: Measure of America calculations using US Census Bureau American Community Survey 2016.

**#OpportunitySD**



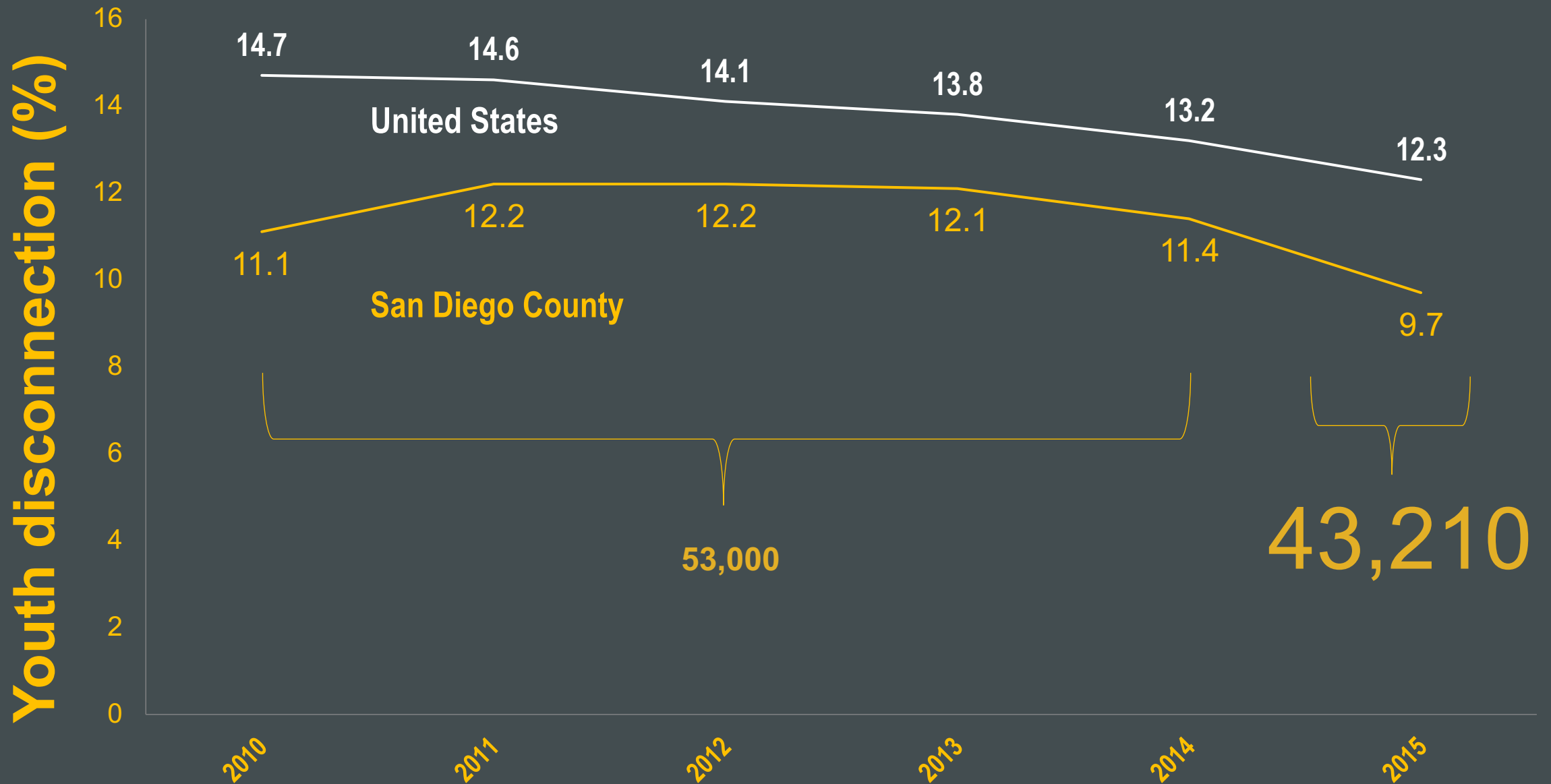
# Cut the rate and halve the gap: *Are we (positively) trending?*

Andy Hall, COO  
San Diego Workforce Partnership  
@sdworkforce  
@Andyhall\_SD



#OpportunitySD

# Youth disconnection (2010–2015)





*Set goals and work toward  
them together.*

—Measure of America (2015)

#OpportunitySD

**CUT THE RATE**

**7.3% by 2020**

**HALVE THE GAP**

**4.4% by 2020**



**40,788**

OF 16–24-YEAR-OLDS IN SAN DIEGO COUNTY  
ARE DISCONNECTED FROM WORK AND SCHOOL,  
DOWN FROM 43,210 (2015 ESTIMATES)

**9.36%**

OF YOUTH ARE DISCONNECTED,  
DOWN FROM 9.7% A YEAR AGO

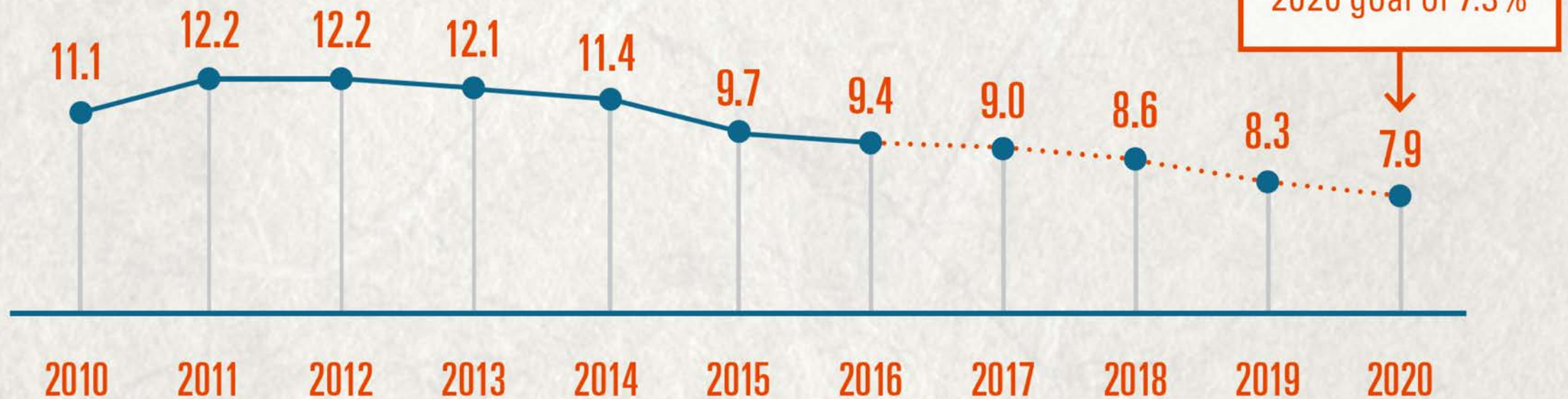
**Data reveal**  
(& a note about timing)



# CUT THE RATE

An update on our region-wide progress to reduce the percentage of 16–24-year-olds not in school and not working to 7.3% or lower by the year 2020.

## SAN DIEGO YOUTH DISCONNECTION RATE (2010–2020)



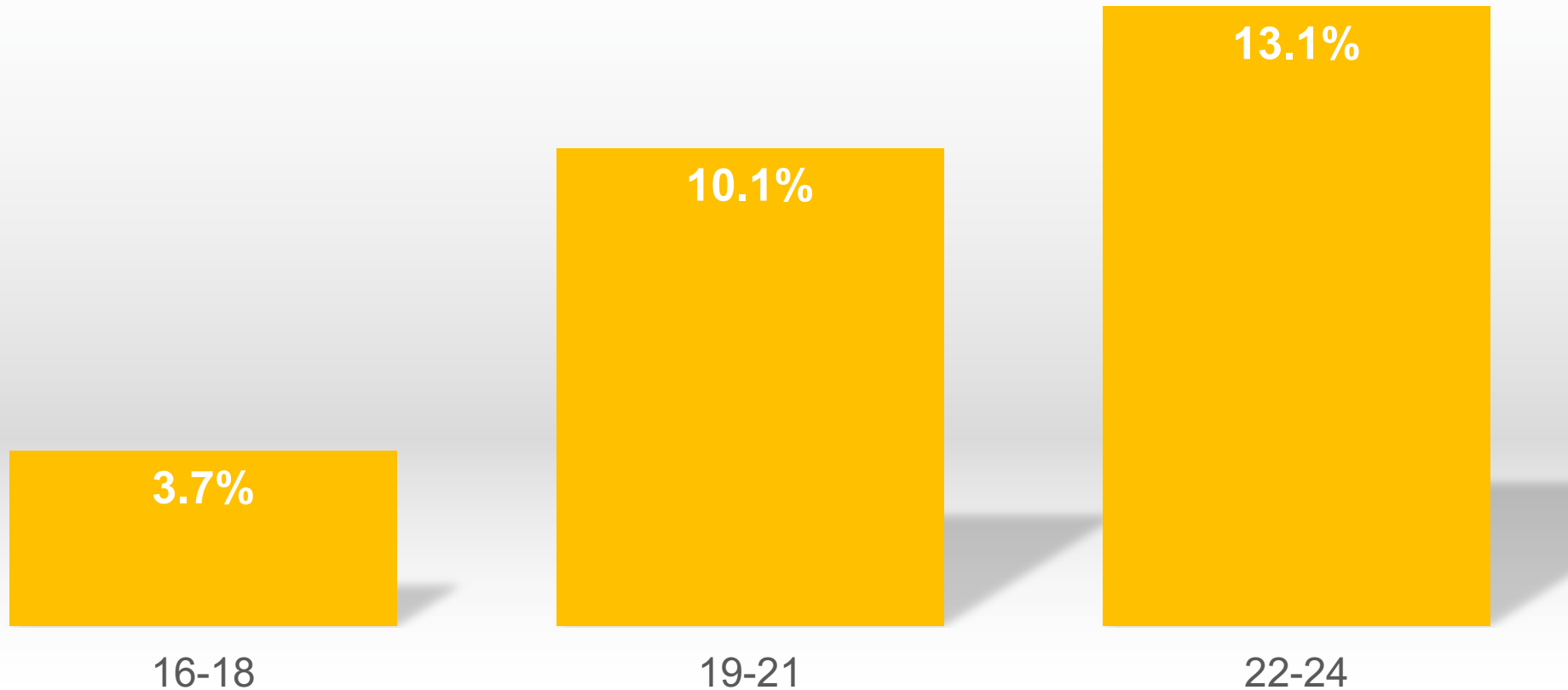
Source: Measure of America calculations using US Census Bureau, American Community Survey, 2016

COMPARED TO ALL 16–24-YEAR-OLDS IN SAN DIEGO,  
OPPORTUNITY YOUTH ARE MORE LIKELY TO BE:

OPPORTUNITY YOUTH		ALL YOUTH
68%	People of color	62%
46%	Extremely poor	36%
24%	Uninsured (lack health insurance)	13%
65%	High school grads or less (age 19+)	38%
18%	Married	8%
26%	Mothers (among females—data set does not identify fathers)	8%
10%	Limited English proficient	6%
52%	Inexperienced in the labor force (never worked or haven't worked in 5+ years)	10%

#OpportunitySD

## San Diego's Youth Disconnection Rate by Age



Source: Measure of America calculations using US Census Bureau American Community Survey (2016).

# The big 3:

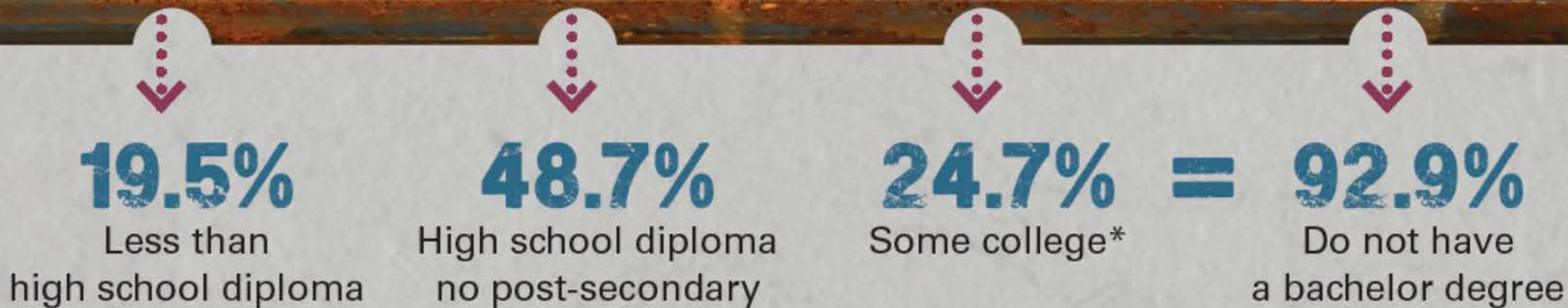
## Drivers of youth disconnection in San Diego County

#OpportunitySD



# ① A leaky pipe

(Disconnection in the education system)



*\*This includes a very small number of youth who have completed associate degrees. The sample size number is too small to reliably separate.*



## ② Last in, first out (Youth unemployment)

5,811 worked in past year

+

7,111 last worked more than 1 year ago or never

---

12,922

#OpportunitySD

# 3 Benched

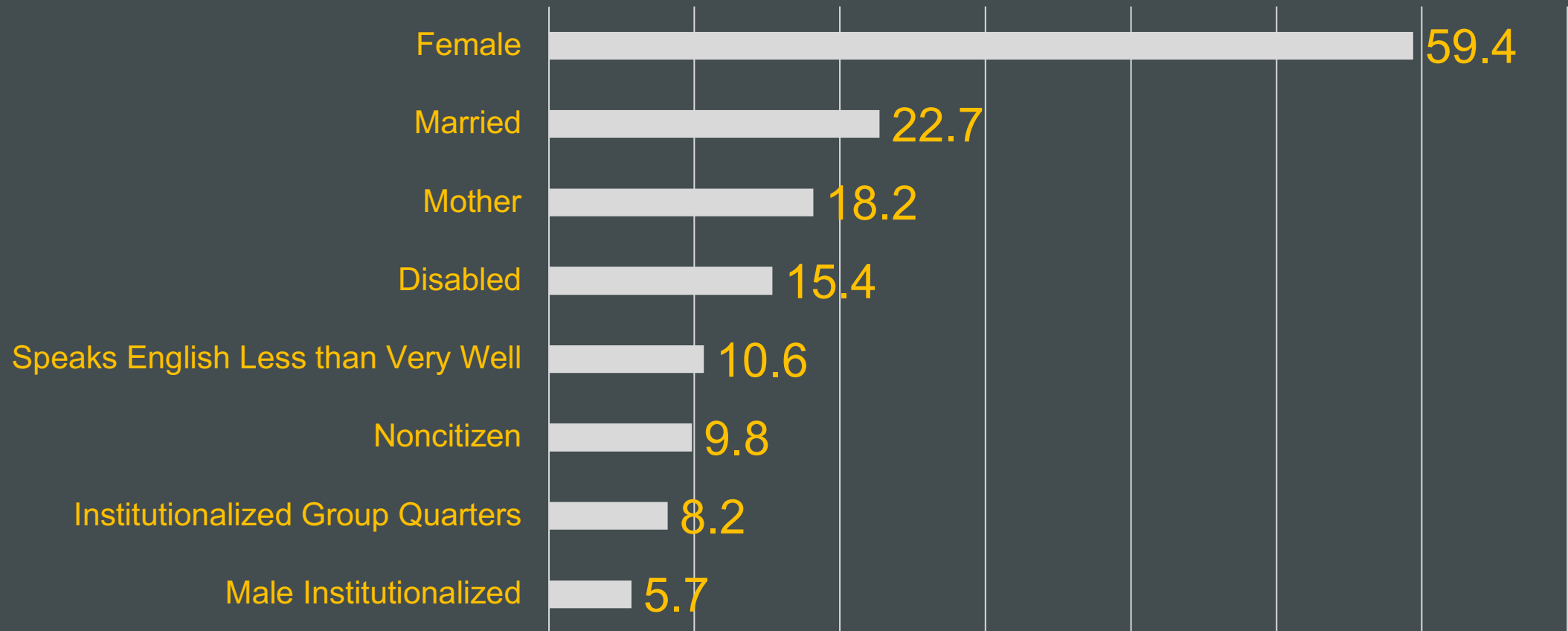
(Labor force participation rates)

27,866

opportunity youth are not  
actively looking for work.

#OpportunitySD

## *Percentage of opportunity youth not in the labor force in San Diego? (not mutually exclusive)*



All of these attributes are overrepresented in the “Not in Labor Force” category of Opportunity Youth Source: Measure of America calculations using US Census Bureau American Community Survey (2014–2016)



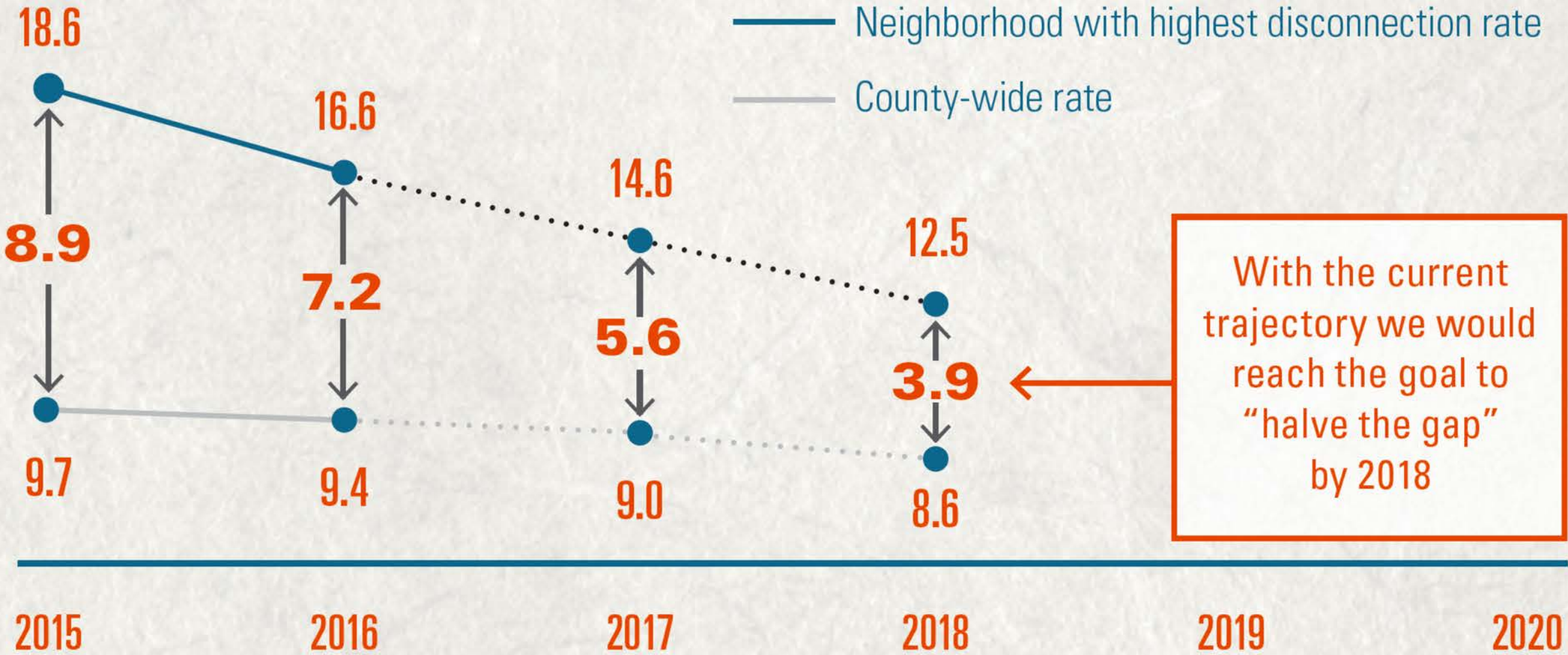


# HALVE THE GAP

By 2020, no neighborhood should be more than 4.4% above the county-wide disconnection rate. This would “halve the gap” between the area with the current highest rate (18.6%) and the county average of 9.7% outlined in our 2017 report (using 2015 data), focusing efforts and resources on underserved communities.



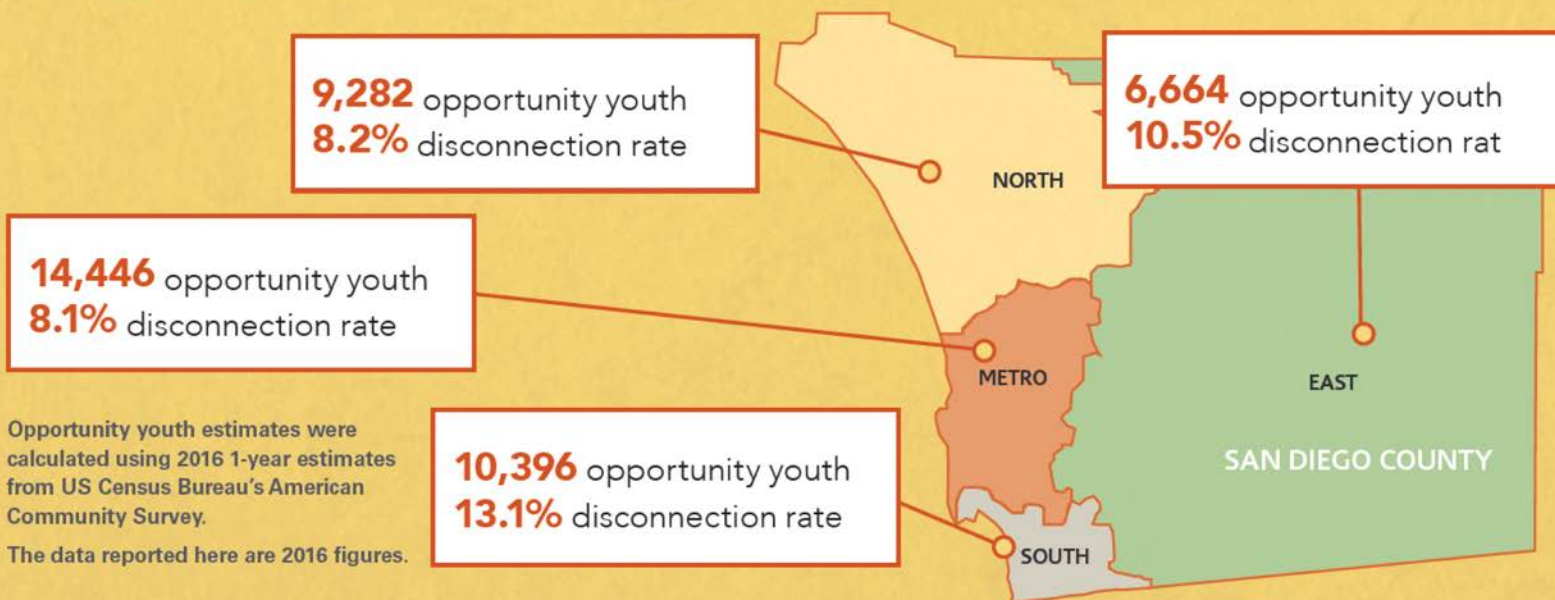
# ADDRESSING NEIGHBORHOOD DISPARITIES



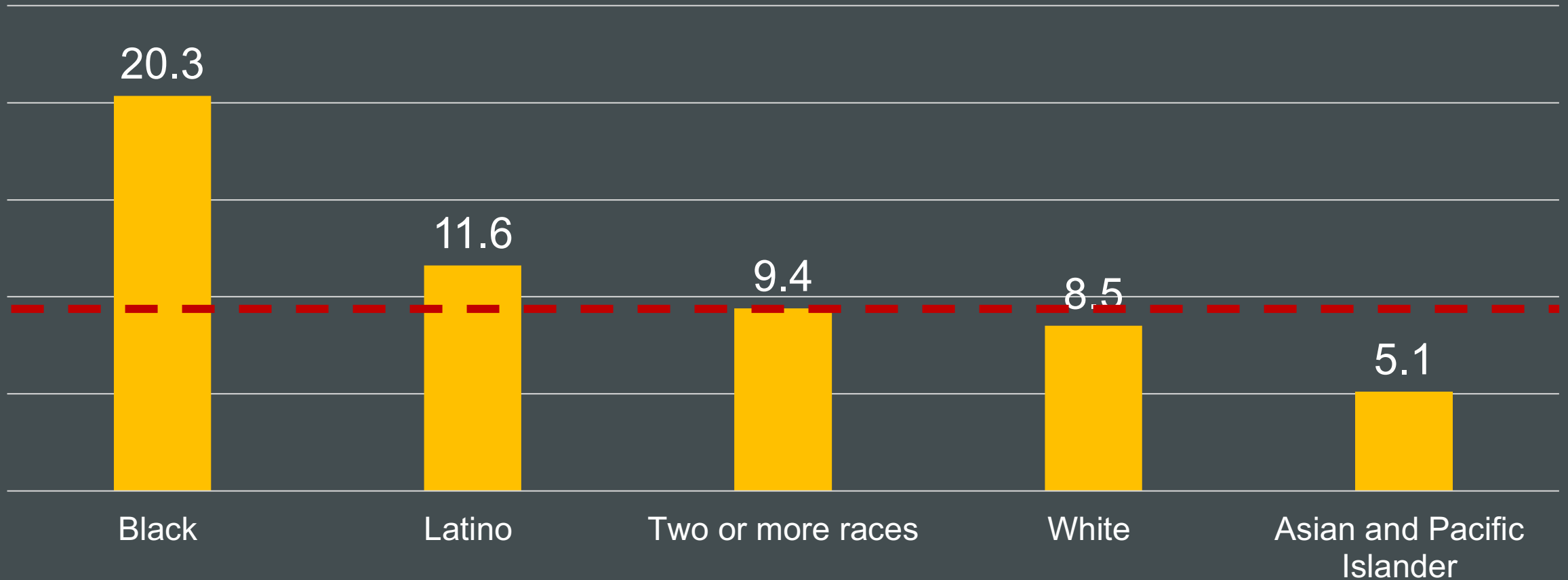
Source: Measure of America calculations using US Census Bureau, American Community Survey, 2016



<b>SAN DIEGO COUNTY PUMA REGION</b> (Areas defined by ACS Data)	<b>2015 OY Rate</b>	<b>Above 2015 Avg</b>	<b>2016 OY Rate</b>	<b>Above 2016 Avg</b>	<b>2016 (#)</b>
Fallbrook, Alpine, Valley Center	18.0%	8.3	16.6%	7.2	2,291
South/Otay Mesa & South Bay	13.6%	3.9	15.8%	6.4	3,638
Vista	18.6%	8.9	15.1%	5.7	2,375
Southeastern San Diego/Encanto, Skyline	14.4%	4.7	14.4%	5.0	3,554
Lemon Grove, La Presa, Spring Valley	17.2%	7.5	14.0%	4.6	2,386
El Cajon, Santee	15.5%	5.8	13.9%	4.5	3,042
Chula Vista (West), National City	13.3%	3.6	12.1%	2.7	3,064
Escondido (East)	15.5%	5.8	11.6%	2.2	2,318
<b>San Diego County Average/Total</b>	<b>9.7%</b>	<b>0%</b>	<b>9.4%</b>	<b>0%</b>	<b>40,788</b>



# San Diego youth disconnection by race/ethnicity



Source: Measure of America calculations using US Census Bureau American Community Survey (2014–2016)

# Moving the movement forward

**Eric Morrison-Smith**  
**Communications Coordinator**  
**San Diego Workforce Partnership**  
**@sdworkforce**  
**@ EricMorrison\_S**



**#OpportunitySD**

- **Register for Opportunity Summit 2018**  
**at [workforce.org/summit2018](https://workforce.org/summit2018)**  
**April 12, 2018 | Town and Country**
- **Full research results on [opportunitysd.org](https://opportunitysd.org)**  
**(coming soon)**
- **Quarterly opportunity youth webinars**
  - **Summer 2018: Leaky education pipeline**
  - **Fall 2018: Youth unemployment**
  - **Winter 2018: Labor force participation**

**#OpportunitySD**



**Thanks!**

**See you April 12:  
[workforce.org/summit2018](http://workforce.org/summit2018)**

